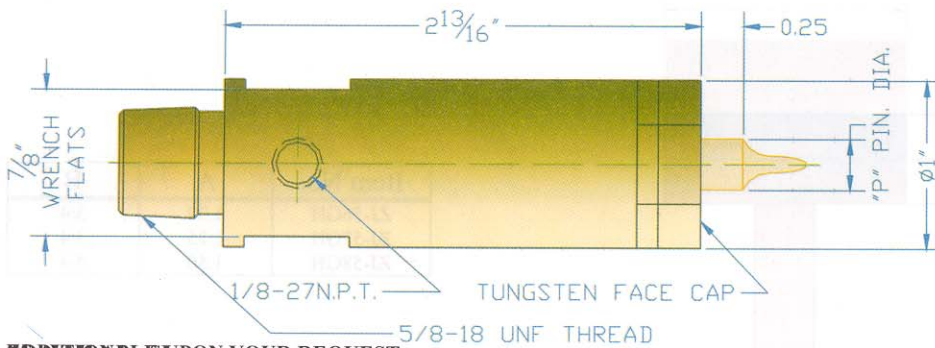


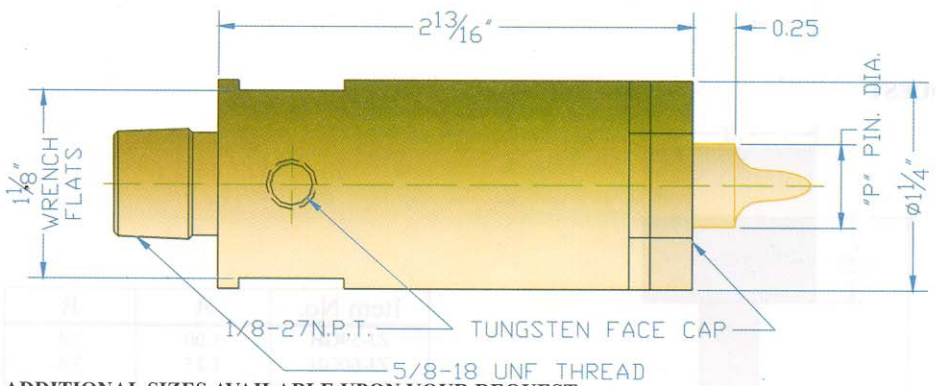
Item No.	H	CAP	PIN
ZJ142#4	.142	ZJC-142-4	P#04
ZJ158#5	.158	ZJC-158-5	P#05
ZJ173#6	.173	ZJC-173-6	P#06
ZJ187M4	.187	ZJC-187-4M	P04M
ZJ198#8	.198	ZJC-198-8	P#08
ZJ220#10	.220	ZJC-220-10	P#10
ZJ226M5	.226	ZJC-226-5M	P05M
ZJ250#12	.250	ZJC-250-12	P#12
ZJ266M6	.266	ZJC-266-6M	P06M
ZJ283-1/4	.283	ZJC-283-25	P25

ADDITIONAL SIZES AVAILABLE UPON YOUR REQUEST



Item No.	H	CAP	PIN
ZJ187M4	.187	ZJC187M4	PM4
ZJ226M5	.226	ZJC226M5	PM5
ZJ266M6	.266	ZJC266M6	PM6
ZJ305M7	.305	ZJC305M7	PM7
ZJ320M8	.344	ZJC344M8	PM8
ZJ384M9	.384	ZJC384M9	PM9

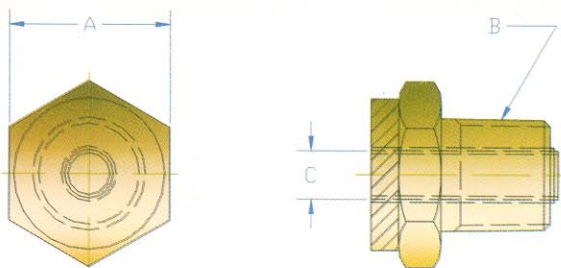
ADDITIONAL SIZES AVAILABLE UPON YOUR REQUEST



Item No.	H	CAP	PIN
ZJ423M10	.423	ZJC423M10	PM10
ZJ463M11	.463	ZJC463M11	PM11
ZJ477M12	.502	ZJC502M12	PM12

ADDITIONAL SIZES AVAILABLE UPON YOUR REQUEST

ELKONITE FACED CAPS



ADDITIONAL SIZES AVAILABLE UPON YOUR REQUEST.
Elkonite is the registered trademark of CMW

Item No.	A	B	C
ZJEC-04	3/4	5/8-18	4 mm
ZJEC-05	3/4	5/8-18	5 mm
ZJEC-06	3/4	5/8-18	6 mm
ZJEC-07	3/4	5/8-18	7 mm
ZJEC-08	3/4	5/8-18	8 mm
ZJEC-09	3/4	5/8-18	9 mm
ZJEC-10	1.00	7/8-14	10 mm
ZJEC-11	1.00	7/8-14	11 mm
ZJEC-12	1.00	7/8-14	12 mm